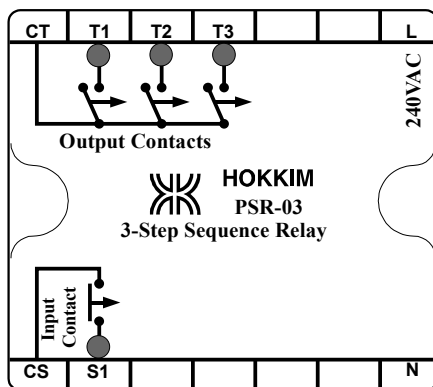


Model : PSR-03
Description : 3-Step Sequence Relay Through Contacts

Supply : L-N (Normally 240 VAC)
Inputs : CS-S1 (Use volt-free contacts to close)
Outputs : CT-T1, CT-T2, CT-T3 (Volt-free contacts rated at 5A 240VAC)

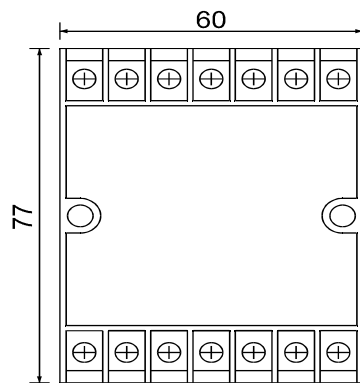
Utilization:

Upon power on with CS-S1 opened, output CT-T1 will close and outputs CT-T2 & CT-T3 will be opened. When CS-S1 is closed, CT-T1 will remain close. When CS-S1 is opened, CT-T1 will open and CT-T2 will close. When CS-S1 is closed again, CT-T2 will remain close. Change occurs at the outputs when CS-S1 re-opens. Each time CS-S1 closed and re-open, the currently closed output will open and the next output in the sequence will close. Only one output will be closed at anytime. The order in which the output closes with each opening of the input CS-S1 is: T1-T2-T3-T1-T2-T3-T1-T2...

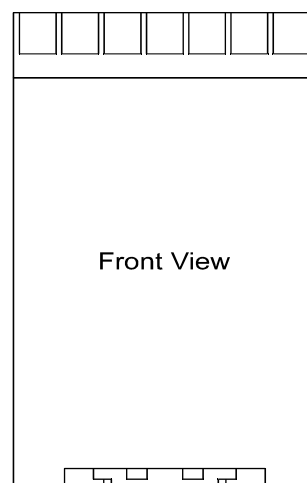


Technical Data

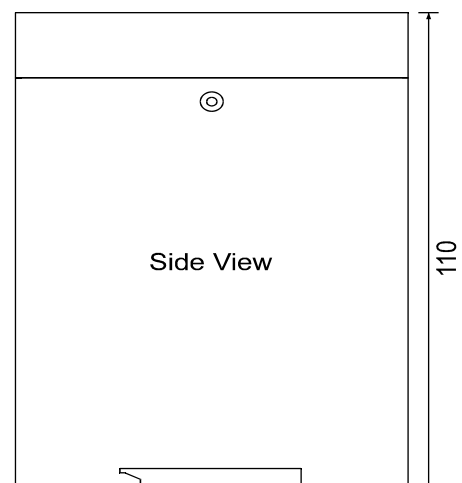
Supply Voltage	:	<input type="checkbox"/> 240VAC	<input type="checkbox"/> 115VAC
		<input type="checkbox"/> 24VDC	<input type="checkbox"/> 12VDC
Frequency	:	50/60Hz for AC Supply	
Consumption	:	2VA	
Relay Response Time	:	100 msec.	
CS-S1 Contact Response Time	:	200 msec.	
Voltage between CS-S1	:	12 VDC	
Indication	:	Green LED (CS-S1)	
		Red LED (11-14)	
		Red LED (21-24)	
		Red LED (31-34)	
Output Contacts	:	5A 240V 50Hz AC1	
		Relay ON	CT-T1 Close
			CT-T2 Close
			CT-T3 Close
		Relay OFF	CT-T1 Open
			CT-T2 Open
			CT-T3 Open



Top View
Dimensions in mm



Front View



Side View